

# Tubular PVC with Safety Grip - #136

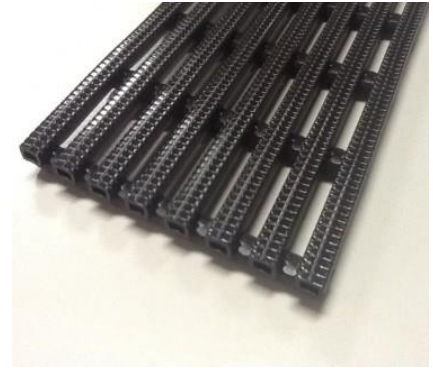
## Wet/Dry Areas Mat – 10mm thick

### Features and Benefits

Manufactured from strong, flexible, PVC sections in a grid formation. Ideal for marine vessels, packing areas, vehicles, golf clubs, chemical plants, machine shops, breweries, laundries etc.

Hygienic, non-porous and easy to clean. Can be used as an indoor mat or outdoor mat. Simple to cut to length or any shape. Contours to uneven floor surfaces. Hard wearing, long lasting and maintenance free.

Excellent anti-fatigue properties. Embossed slip-resistant surface. Also great for changing rooms, around pools, spas, and in showers and any other wet area.



### Mat Specifications

Uses: All types of Wet areas but can also be applied in Dry areas too.

Thickness: 10 mm

Warranty: 1 year conditional

Flammability: Flexible from -10c to +60c. This material does not support combustion, being self-extinguishing on removal of flame. Gases evolved on flame application are predominantly HCl and CO

Colours: Black, Blue or Grey

### Mat Stock Size

900mm x 12 metre rolls -

Blue

Grey

Black

1200mm x 12 metre rolls -

Blue

Black

Can be cut to your specifications

